

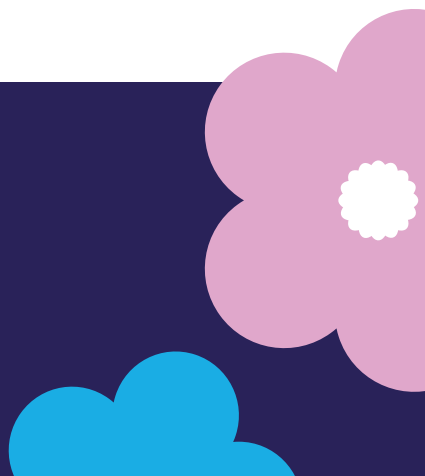
Personal Independence Payment (Mobility)



MESOTHELIOMA UK

www.mesothelioma.uk.com

0800 169 2409



Personal Independence Payment (Mobility)

Have you been diagnosed with mesothelioma and are you under state pension age?

Do you have walking difficulties because of the mesothelioma?

You may be able to get Personal Independence Payment (mobility component) if you are unable to walk or can only walk a short distance before you feel severe discomfort.

How to claim

This benefit may be claimed at the same time as you claim Personal Independence Payment (daily living component) under the Department for Work and Pensions (DWP)

“Special Rules”. You will be asked some additional questions on your ability to get around. Please see the separate factsheet on how to claim Personal Independence Payment (daily living).

If you have any queries on whether you can claim Personal Independence Payment (mobility) you can contact the Personal Independence Payment Helpline on **0800 121 4433**.

Benefit rates

The mobility component of Personal Independence Payment can be paid at either the enhanced or the standard rate depending on the extent to which your mobility is affected. Benefit rates are reviewed

each year, normally in April. Information regarding current figures can be found at www.gov.uk or contact the Mesothelioma UK National Welfare Benefits Adviser (see overleaf).

Will my savings or income or earnings affect payment of the benefit?

- This benefit is paid on top of any other income or savings you may have.
- It is non-taxable so it is not required to be declared to the Inland Revenue.

Will Personal Independence Payment (mobility) affect my other benefits?

- Payment of this benefit will not affect any of

your means tested benefits.

- You may even get more of these benefits. For housing benefit and council tax you should contact your local council Revenue and Benefits section. For all other benefits, including Universal Credit, you should contact the DWP on **0800 169 0310**.

Scotland

If you live in Scotland, the provision of disability benefits is going to change.

For details please contact the Mesothelioma UK National Welfare Benefits Adviser (see overleaf) or search www.gov.scot

Personal Independence Payment (Mobility)

Further help

For help to check benefit entitlement, assistance with form filling or to discuss any problems with benefit/compensation applications please contact the Mesothelioma UK National Welfare Benefits Adviser on **0800 169 2409** or email **info@mesothelioma.uk.com**

Alternatively, you can contact an Asbestos Support Group or your local Citizens Advice office.



MESOTHELIOMA UK

www.mesothelioma.uk.com

0800 169 2409

