

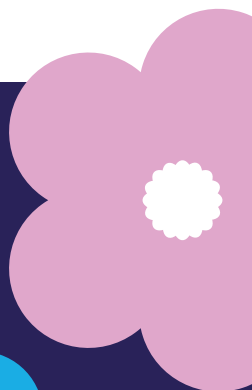
# Patient Travel Expenses



**MESOTHELIOMA UK**

[www.mesothelioma.uk.com](http://www.mesothelioma.uk.com)

0800 169 2409



# Patient Travel Expenses

Mesothelioma UK acknowledges that people diagnosed with mesothelioma do not always have access to specialist opinion and clinical trials at their local hospital. Therefore, Mesothelioma UK support travel expenses for those attending centres outside their local area, to access specialist opinion and/or clinical trials.

## Criteria for claiming:

- Seeking specialist/second opinion **out of area**.
- Accessing a clinical trial which **does not provide travel costs**.
- **In addition**, the hospital you are attending **is out of area and not your local hospital/cancer centre**.

## What costs can be claimed for the patient and one companion?

- Standard class travel or mileage @ 25p per mile
- Up to £60 per night for accommodation for maximum of 2 nights

- Car parking to maximum of £5.00 per visit

## Claiming your travel expenses

So that we can process your claim promptly, please take the time to read these guidelines.

Claim forms are available from Mesothelioma UK only and each form has an individual reference number. Please complete all sections on the form, failing to do so may delay payment.

## Please provide:

- Details of your journey – remember to put total mileage for return journey.
- State reason for attendance e.g. clinic, treatment admission etc .
- Provide details of your accommodation costs if applicable.
- Enclose receipts for public transport, accommodation etc. Mesothelioma UK cannot support these claims without receipts

You can claim car parking, maximum claim is £5.00 per visit – please remember to include receipt / ticket with your claim form –  
**Please remember to sign your claim form**

### Declaration from a Healthcare Professional

A Hospital stamp and signature from a healthcare professional (consultant or specialist nurse) is required. Claims cannot be processed without this. It is the responsibility of the healthcare professional to ensure that claims meet criteria set within this guidance, and to read the declaration before signing.

Please forward your completed claim forms and receipts to Mesothelioma UK.

Any queries please call the help line 0800 169 2409.

### Patients pursuing civil claims

Please ask your solicitor to include your travel costs in your claim with a view to refunding Mesothelioma UK.

If you have had contact with a **Mesothelioma UK Clinical Nurse Specialist** please also explore with your solicitor and nurse the possibility of including costs of the nursing hours within your claim.

### Travel grants from other organisations

If you are in receipt of a grant from another organisation please declare this on your form.

Mesothelioma UK will support expenses incurred in excess of the grant, in line with this policy.

**Each claim form has a unique reference number.**

**Claim forms are only available by contacting Mesothelioma UK.**

Mesothelioma UK would like to thank the charity's supporters. Without your generous efforts and donations, this initiative would not have been possible.

## Mesothelioma UK

provides specialist, impartial, up to date support and information.



**To sponsor or donate contact: Mesothelioma UK**

**CIO Registered Charity Number 1177039**

**Email | [info@mesothelioma.uk.com](mailto:info@mesothelioma.uk.com)**

**Freephone | 0800 169 2409**

**Website | [www.mesothelioma.uk.com](http://www.mesothelioma.uk.com)**

**Reviewed by: Liz Darlison | Review Date: September 2019**

Download information from  
[www.mesothelioma.uk.com](http://www.mesothelioma.uk.com)

To request a copy, freephone 0800 169 2409  
or email [info@mesothelioma.uk.com](mailto:info@mesothelioma.uk.com)