

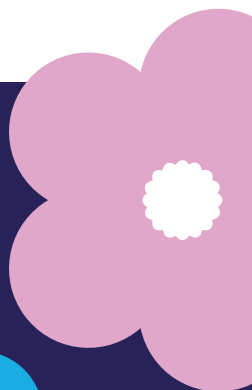
Mesothelioma of the Testicle



MESOTHELIOMA UK

www.mesothelioma.uk.com

0800 169 2409



Mesothelioma of the Testicle

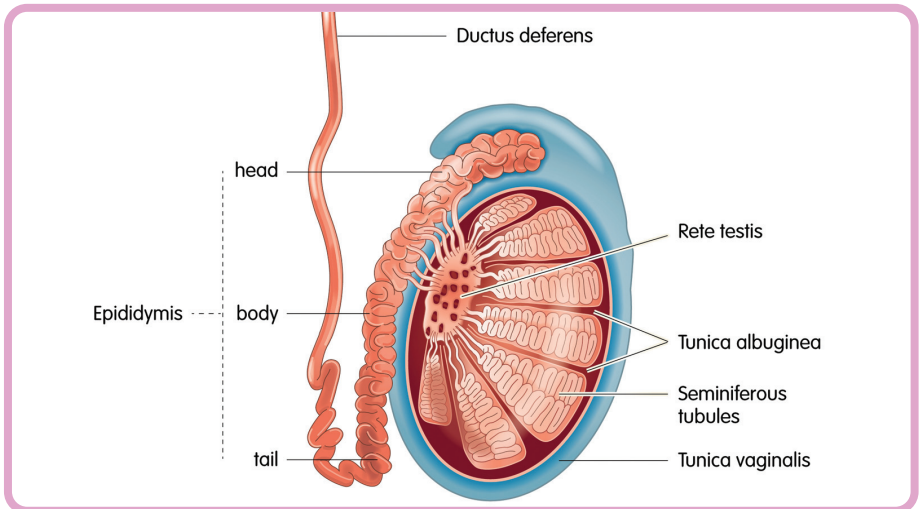
Mesothelioma is a cancer that develops in the linings (membranes) that cover some of the body's internal organs.

Mesothelioma of the testicle occurs when the disease is found in the tunica vaginalis, a thin membrane that surrounds, protects and insulates the testicles.

The tunica vaginalis is similar to the lining of the chest and abdominal cavity. It is made up of mesothelial cells and it has two layers, a visceral (inner) layer and a parietal (outer) layer.

Incidence, causes and presentation

Mesothelioma of the tunica vaginalis is a very rare cancer. It accounts for



only 1% of mesothelioma cases and only about 20 are diagnosed each year in the UK. Most people who develop the disease are in their 50s or older.

Usually mesothelioma is caused by asbestos. However, not everyone with the condition remembers being exposed to it, so there may be other causes.

Unlike mesothelioma found in other parts of the body, there are not many symptoms associated with mesothelioma of the testicle.

The appearance of a lump in the scrotum is the most common symptom. This is usually caused by a hydrocele (when fluid builds up in the tunica vaginalis).

Aside from the tunica vaginalis, it is thought that some cases of mesothelioma of the testicle start in the lining of the abdominal cavity (peritoneal membrane) and descends down to one or both of the testicles.

Treatment options

As the disease is so rare, research into treatment is on-going.

Currently, the most common treatment option involves an operation to remove the affected testicle.

Other treatment options include chemotherapy or radiotherapy.

Mesothelioma UK

provides specialist, impartial, up to date support and information.



To sponsor or donate contact: Mesothelioma UK

CIO Registered Charity Number 1177039

Email | info@mesothelioma.uk.com

Freephone | 0800 169 2409

Website | www.mesothelioma.uk.com

Reviewed: October 2021 | Review due: October 2023 | MED-16-02

Download information from
www.mesothelioma.uk.com

To request a copy, freephone 0800 169 2409
or email info@mesothelioma.uk.com