

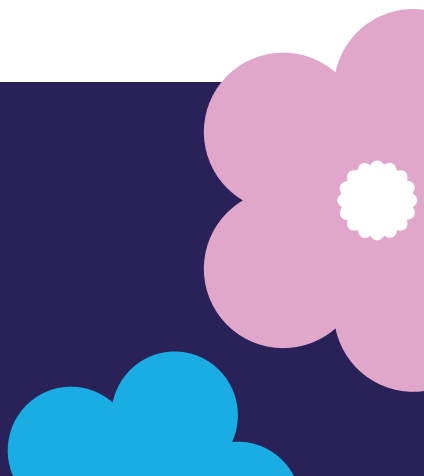
Industrial Injuries Disablement Benefit



MESOTHELIOMA UK

www.mesothelioma.uk.com

0800 169 2409



Industrial Injuries Disablement Benefit

Have you been diagnosed with mesothelioma?

Has your exposure to asbestos been caused by your current job or any previous job? Are/were you an “employed earner”, i.e. you work/ed for an employer? If so, you should be able to claim **Industrial Injuries Disablement Benefit**.

The Department for Work and Pensions (DWP) pays this to people who have an illness caused by their job or working conditions/environment.

- You do not need to have paid any National Insurance contributions.
- There is no upper age limit as you can claim even if you are over state pension age.

- You can claim whilst you are still working.

How to claim

A claim form can be obtained from the DWP by telephoning **0800 121 8379**.

Form **BI100 PN(A)** needs to be completed by the hospital consultant or specialist nurse and returned with the completed form. If you have a diagnosis of mesothelioma you will be given a 100% disability assessment.

When awarded Industrial Injuries Disablement Benefit you will be asked if you want to apply for **Constant Attendance Allowance**. If your care needs are significant then you should complete the form for this benefit. In certain cases

Exceptionally Severe Disablement Allowance may be awarded.

Benefit rates

Benefit rates are reviewed each year, normally in April. Information regarding current figures can be found at www.gov.uk or contact the Mesothelioma UK National Welfare Benefits Adviser.

What if I have savings?

Your savings do not affect Industrial Injuries Disablement Benefit.

How much can I earn?

You can work full time and still claim Industrial Injuries Disablement Benefit.

Can I claim Industrial Injuries Disablement Benefit on top of other benefits? Yes.

You can claim this benefit on top of the following:

- Incapacity Benefit/contribution based Employment and Support Allowance/ “new style” Employment and Support Allowance
- Carer’s Allowance
- State Retirement Pension
- Disability Living Allowance or Personal Independence Payments
- Attendance Allowance

Will it affect my other benefits?

Yes.

- Industrial Injuries Disablement Benefit is treated as income for means tested benefits
- Any Income Support/Income related Employment & Support

Industrial Injuries Disablement Benefit

Allowance, Pension Credit, housing/council tax benefit and tax credits received will however be reduced, so seek advice.

- Any Universal Credit you receive will also be affected by this benefit.

How to claim if you are the widow, widower or other dependent of someone who has died as a result of mesothelioma?

It is possible to claim after the sufferer has died. You need to claim within 12 months of the date of death, but a late application will also be considered.

Contact the DWP as above. The total payment will be a lump sum of 13 weeks' Industrial Injuries Disablement Benefit.

Further help

For help to check benefit entitlement, assistance with form filling or to discuss any problems with benefit/compensation applications please contact the Mesothelioma UK National Welfare Benefits Adviser on **0800 169 2409** or email

info@mesothelioma.uk.com

Alternatively, you can contact an Asbestos Support Group or your local Citizens Advice office.



MESOTHELIOMA UK

www.mesothelioma.uk.com

0800 169 2409

