

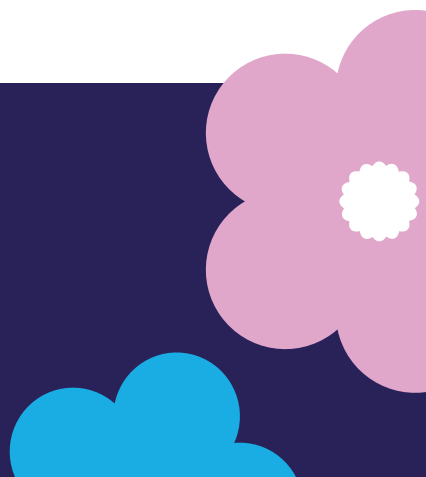
# Carer's Allowance



**MESOTHELIOMA UK**

[www.mesothelioma.uk.com](http://www.mesothelioma.uk.com)

0800 169 2409



## Carer's Allowance

### Are you caring for a person who has mesothelioma?

You may be able to claim Carer's Allowance. Carer's Allowance is a taxable benefit and forms part of your taxable income.

### Who can get Carer's Allowance?

You can get Carer's Allowance if you meet all the following conditions:

- you are aged 16 or over and not in full time education
- you spend at least 35 hours per week caring for a disabled person who gets one of the following benefits: Attendance Allowance, Constant Attendance Allowance, the middle or higher rate for personal care of Disability Living Allowance, the daily living component of Personal Independence Payment (either rate) or Armed Forces Independence Payment
- you don't earn more than the earnings limit per week. This figure increases each year. For the current figure visit [www.gov.uk](http://www.gov.uk) or contact the Mesothelioma UK National Welfare Benefits Adviser (see below)
- you are in Great Britain when you claim – there are some exceptions, for example, for members and family members of the Armed Forces
- you have been in the UK for at least 104 weeks in the past 156 weeks
- you are habitually resident in the UK, Ireland, Isle of Man or the Channel Islands

- you are not subject to immigration control that would stop you getting benefit

### Can you have savings and still claim?

Yes. The Department for Work & Pensions does not take into account any savings you may have.

### Can you claim Carer's Allowance if you are receiving state retirement pension?

If your state retirement pension is less than Carer's Allowance you will continue to receive your state pension and receive the balance of your Carer's Allowance on top. If your state retirement pension is more than Carer's Allowance then it may still be worthwhile making a claim as you could receive a Carer Premium. This can be

financially beneficial if you are entitled to means tested benefits eg. pension credit, support with council tax, housing benefit etc. Always check with the person you are caring for before you make a claim for Carer's Allowance as they may lose some of the benefits they get, such as a severe disability addition, if you make a claim. The rules surrounding Carer's Allowance can be complex so seek advice.

### Can it be paid on top of any other benefits?

Carer's Allowance can be paid in addition to the following:

- Industrial Injuries Disablement Benefit
- Disability Living Allowance (care/mobility)
- Personal Independence Allowance (daily

# Carer's Allowance

living/mobility)

- Attendance Allowance

## Benefit rates

Benefit rates are reviewed each year, normally in April. Information regarding current figures can be found at [www.gov.uk](http://www.gov.uk) or contact the Mesothelioma UK National Welfare Benefits Adviser (see below).

## How to claim?

- in England, Wales and Scotland, online at [www.gov.uk](http://www.gov.uk) and in Northern Ireland online at [www.nidirect.gov.uk](http://www.nidirect.gov.uk)
- in England, Wales and Scotland by phoning the Carer's Allowance Unit on

**0800 731 0297.** In Northern Ireland, by phoning **0300 123 3356**

## Scotland

If you live in Scotland, the provision of Carer's Allowance is changing. A temporary payment called the Carer's Allowance supplement is paid in addition to Carer's Allowance. This will continue to be paid until Carer's Allowance is replaced by a new Scottish benefit. For details, please contact the Mesothelioma UK National Welfare Benefits Adviser (see below) or search [www.gov.scot](http://www.gov.scot)



# MESOTHELIOMA UK

[www.mesothelioma.uk.com](http://www.mesothelioma.uk.com)

**0800 169 2409**

