

Mesothelioma UK Newsletter



Winter Issue - December 2011

Mesothelioma UK's Range of Patient Information Booklets

Our new range of patient information booklets includes the following titles:



1. Asbestos and the Diseases it Causes.
2. Concerned About Asbestos Exposure.
3. What is Mesothelioma?
4. Accessing Mesothelioma Treatment and Care.
5. Mesothelioma Support Services.
6. Applying for a Blue Badge and Free Prescriptions.
7. Radiotherapy and Mesothelioma.
8. Surgery for Malignant Pleural Mesothelioma.
9. Tunnelled Indwelling Pleural Catheter.
10. Local Anaesthetic Thoracoscopy.
11. Sweating in Mesothelioma.
12. Pleural Effusion.
13. Ascites.
14. Action Mesothelioma Day.
15. The Petal Guide to Recovery.
16. Peritoneal Mesothelioma.
17. Percutaneous Cordotomy.
18. Choosing the Right Solicitor.

We also have a new leaflet out called "About Mesothelioma UK". It explains about Mesothelioma and the services of Mesothelioma UK. It replaces the green and white leaflet previously used.

They can be ordered by calling 0800 169 2409 or emailing www.mesothelioma.uk@uhl-tr.nhs.uk.

For a downloadable copy of the patient information in factsheet form please go to: www.mesothelioma.uk.com/patient-information.htm

Welcome to this last Mesothelioma UK Newsletter of 2011

The mild weather has meant Christmas has crept up on us without us realising, where has the year gone? I am delighted with the progress Meso UK has made over this last year, we really are a growing force!

We couldn't do it without the support of patients, carers, fundraisers, financial sponsors, healthcare professionals, our trustees, the steering committee and of course the brilliant team that work alongside me here in the office, not to mention Gerry, Sally, Frances and Hannah, our nurse advisors.

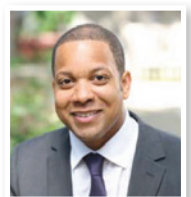
We have recently agreed to fund a second Mesothelioma UK Nurse. Gerry Slade is already based at Papworth Hospital, Cambridge and with Meso UK's financial support we can now ensure continued Mesothelioma Specialist Nursing at Papworth. This joint venture will not start until March 2012 and I am really pleased to report that thanks to a generous donation we already have funding for a 3rd Mesothelioma UK Nurse Specialist post and are hoping to get that post started next spring/summer. If all goes according to plan we will have a 4th post before the end of 2012!!! Watch this space.

The Mesothelioma Care in Practice on-line educational resource will run for the 3rd time starting in January 2012 and we already have UK, USA and Japanese nurses interested in joining. The module also won 1st place in the 2011 Excellence in Oncology Awards within the Best Professional Education Initiative (see Page 3). Sally Moore and I were honoured to receive the award on behalf of the Royal Marsden team which includes Sally and I, Trish Hunt, David Brighton, David Gledhill and Dale Russell, what an achievement, it really couldn't be better. Thank you to the team for making this happen.

We hope to focus on developing a clearer national pathway for peritoneal Mesothelioma over the coming year; the Mesothelioma Nurse Action Team will be discussing this amongst other issues at our meeting on 13th December. I would also like to urge all of you to circulate the Mesothelioma Experience Survey as far and wide as you can. The more responses we get the more representative the findings will be.

PLEASE PLEASE contact us for copies or use the link <http://www.surveymonkey.com/mesothelioma> to access on line.

The Leicester Thoracic Oncology Team are always very supportive to me and Meso UK and I are extremely happy to announce that Dr Dean Fennell a leading lung cancer and Mesothelioma specialist is coming to join the Leicester Team. Dr Fennell is well known for his work in Mesothelioma, him coming to work here will be a huge boost for Meso UK. (Picture courtesy of Cancerresearchuk.org)



I hope you all have a very comfortable and peaceful Christmas and New Year.

Thank you to everyone for your continued support.

Liz Darlison

Macmillan Mesothelioma Consultant Nurse



Mesothelioma and Lung Cancer Study Day Imperial War Museum in Duxford

Over 60 patients, carers and health-care professionals heard presentations on mesothelioma diagnosis, treatment, research and patient support at a study day near Cambridge on 16 September.

The conference heard Dr Paul Beckett, chair of the British Thoracic Society lung cancer and mesothelioma specialist advisory group bring delegates up to date on the likely growth in new cases of mesothelioma in the UK over the next 40 years. He emphasised the importance of finding out exactly what jobs a mesothelioma patient has had, since often they may be completely unaware of their exposure to asbestos in high-risk occupations like carpentry, floor-laying and the motor trade.

The highlight of the day was a session devoted to patient and carer experiences, and the growth of the Papworth mesothelioma support group. Sandy McNaughton, a mesothelioma sufferer, spoke movingly of his experience of successive cycles of chemotherapy. Mike Wood, whose wife Patricia is a patient, described her determination to stay positive and get back on the golf course after radical surgery, bringing a tear to the eye of more than one delegate. Both stressed the essential support given to patients and their carers by an effective support group.

The event was held at the conference centre in the Imperial War Museum, Duxford, and sponsored by law firm Irwin Mitchell. Dr Mark Slade, clinical director of thoracic services at Papworth Hospital, was in the chair and also spoke about speeding the diagnostic pathway for meso patients. A session on new trials of meso treatments was presented by Dr David Gilligan, clinical oncologist in Cambridge.

A patient/carer perspective...

To bring together not only health professionals but patients and their carers as well as lawyers was a bold and innovative venture, attended, we suspect, by some anxiety.

In the event the Study Day at Duxford aerodrome on 16 September of which the first half was devoted to Mesothelioma was a very great success.



Picture courtesy of
www.chooseyourevent.co.uk

This was not only for the content and relevance of the presentations but as a further lessening of that possible divide between sufferers and their doctors.

We learnt a lot and were never patronised but rather were encouraged by all the research which goes on and the substantial efforts being made to improve diagnosis as well as the range of therapies.

As far as the epidemiology is concerned we seem to be living at the wrong side of the curve!

We were especially interested in the initiation and development of support groups which are spreading all over the world and so helping more and more people to cope with their illness. All of us must have felt privileged to be part of Papworth which is clearly a leader in this as in many other ways.

Particularly important were the talks by a patient and a carer who led us through their experiences with great honesty and who had survived a long and arduous journey. It was great that they both looked so well!

The 'interview' with a journalist with lung cancer was refreshing, showing how hope and a positive attitude can help.

The meeting was well organised in a very interesting place. The hospitality was generous to a fault and the staff helpful and welcoming.

We came away grateful to the sponsors, Irwin Mitchell, having learnt a great deal and with the feeling, above all, that we were being seen as people rather than items.

*Kate and
Graham Petrie*

Pleural plaques patients in Scotland can now claim compensation

Legislation has been passed in Scotland to allow people with past exposure to asbestos to claim compensation.

This includes people with pleural plaques, pleural thickening and asbestosis.

A previous House of Lords ruling said that damages could not be claimed for pleural plaques. (Pleural Plaques are small, areas of benign scarring on the lungs caused by exposure to asbestos fibres).

However, the Scottish Government disagreed with the House of Lords ruling and MSPs passed the Damages Act in 2009, allowing claims to be made.

At the UK Supreme Court the insurance industry argued that it broke European Convention on Human Rights provisions on property rights and constituted unreasonable legal interference, but the UK Supreme court ruled that it could not be said that the "judgement of the Scottish Parliament was without reasonable foundation".

The move will be welcomed by those in Scotland who suffer from asbestos related diseases, many of whom are former Clydeside shipyard workers.

The Lords' judgement - which stated that those with pleural plaques could no longer claim against the negligence of an employer - will still apply in England and Wales.

Tracey Heseltine

**Frozen windscreen?
Don't get caught,
get your key ring size
Ice Scraper for
£2.00
Ring 0800 169 2409
for yours today!**

Mesothelioma Educational Resource Wins Award at Excellence in Oncology Awards 2011

Mesothelioma UK identified some years ago there was a need for an educational resource specifically for mesothelioma.

Collaboration with the Royal Marsden School of Cancer Nursing and Rehabilitation has ensured such a resource is now available and in recognition of the module's success the team were recently announced as winners at the 2011 Excellence in Oncology Awards for the Best Professional Education Initiative.

Liz first met with the RMH team, Sally Moore – Research Fellow, Patricia Hunt – Lecturer Practitioner, David Brighton* – Professional Development Facilitator and Dale Russell - Knowledge Resources Manager, over 2 years before the first participants started the module. (*David Brighton left and he was replaced by David Gledhill – Virtual Learning Environment Manager).

The Mesothelioma Care in Practice Module is evidence based, specialist, interactive, totally 'e' learning package that runs over 12 weeks. It can be taken as a stand alone module or as part of a degree or masters programme.

To date, two modules have been held and twenty six nurses from a variety of clinical backgrounds and geographical areas (including two from Australia and one from South Africa) have participated.

Nurses from the USA and Japan have already registered for the next module starting in late January 2012.

Liz is hugely grateful to the RMH for their ongoing support and especially to Sally, Trish, David, Dale and David for being so committed. Without question, together the team have created something that has a positive impact on the outcome and experience of Mesothelioma patients throughout the world.



Left to right: David Dunlop (Chair of the Excellence in Oncology Awards 2011 and Clinical Director, Regional Services Directorate NHS Greater Glasgow & Clyde), Sally Moore, Liz Darlison, Nick Owen (TV newsreader) and Robert Day (Head of Pfizer Oncology UK)

Injustice Bill Update

Part 2 of Legal Aid, Sentencing and Prosecution of Offenders Bill making personal injury claimants pay up to 25% of their compensation in legal costs was passed from the Commons to the House of Lords without change.

Their Lordships spoke passionately about the effects of the Bill on many classes of people, including mesothelioma sufferers, in their second reading of the Bill on the 21 November.

Lord Alton: "...mesothelioma sufferers will have to bear their share of risks by paying up to 25 per cent of their damages for pain and suffering in legal costs. That should simply be unconscionable."

Lord Collins: "One of the many quotations I received that moved me was from

someone [a mesothelioma sufferer] who through no fault of their own is now suffering from exposure to asbestos.

They said:
"How can this be morally correct? To make in my case, the most heartbreaking time of my life and the family, much harder to bear. My case has not reached court yet...Being diagnosed was a big shock. To then be expected to pay legal costs from any compensation that might be awarded adds yet more worry that is not needed".



Understanding Mesothelioma Booklet

To order
"Understanding
Mesothelioma"
please go to
www.be.
macmillan.org.uk



You will need to register and type the name of the booklet in the search box.

Alternatively you can type
"Understanding Mesothelioma" in
Google Images and it will bring up the
booklet.

Lord Davidson: "Many charities, including those that support the victims of asbestos, have expressed real concern that this Bill threatens their ability to get access to justice. I will read a few excerpts from a letter written by Yvette Oldham, whose partner Trevor was a [mesothelioma] victim of asbestos."

In response to the Forum's letter to every member of the Lords we have received phone calls and emails pledging support. If you know a member of the Lords please make urgent contact and urge them to support their fellow Lords in opposing this Bill.

Tony Whitston
Chair
Asbestos Victims Support
Groups Forum UK

Is it More Difficult for Women with Mesothelioma to Claim Compensation?

At a National Lung Cancer Forum for Nurses conference 3 or 4 years ago, a solicitor speaker was asked whether it was worth women with mesothelioma making a claim. The obvious answer to that is 'yes, of course,' but the questioner had highlighted a perceived problem for women who have mesothelioma and want to claim compensation.

We are likely to see more women with mesothelioma over the next decade. According to the 2008 HSE study, the number of annual deaths amongst women has increased more rapidly than the increase amongst men over the last 10 years. Although increasing, the number of women with mesothelioma is not yet 20% of the total number in the UK.

How do women with mesothelioma fare under the litigation process compared with men? Many of the women that I see with mesothelioma come from a group of women who have had slight or intermittent exposure. Some examples of those who have had slight or intermittent exposure are those who work in offices or factories where asbestos has been used or in buildings where asbestos had been part of the construction or makeup of the building. For example I have seen nurses, teachers, office workers, caterers and process workers. Some are unaware initially as to where they have had exposure.

The UK Benefits System favours those who recollect exposure to asbestos dust during their work. Industrial Injuries Disablement Benefit is only there for those who have had exposure during work. This is a payment of £150.30 per week which can mount up to a substantial sum.

Under the civil system of litigation, it is often more difficult for women to claim successfully. I think that this is partly because men have multiple sources of exposure to asbestos. I have seen situations where siblings have developed asbestos disease having had exposure to asbestos dust from their father's clothing in the 1950's. The boys have been able to claim compensation from their employers because they have gone to work in industries where they have had further asbestos exposure whereas the girls have not been able to claim because there is no legal liability for family members if the exposure took place in the 1950's.

In terms of evidence of exposure, men are more likely to have handled asbestos directly themselves and are more likely to recall exposure to it.

A French study which was published last year in the Journal of Occupational and Environmental Medicine showed that the incidence of mesothelioma without any identified asbestos exposure (IAE) is usually higher among women, while male incidence is mainly attributed to IAE.

The study concluded that mesothelioma mortality incidence showed that female cases occur in the same geographical areas as male cases suggesting asbestos has a major influence on female mesothelioma, most likely through environmental exposure. It makes it more unfair that women have a harder struggle to claim.

A decision from the Supreme Court in March gives some hope to women. The case concerned 2 women who had been exposed to asbestos dust. One lady had worked in a factory and another was a school pupil whom I represented. Both had had comparatively light exposure to asbestos. Despite this, both succeeded.

So, it is possible through persistence to be able to claim compensation for women who have very little recollection of asbestos exposure through obtaining witness evidence and documentation to support the claim.



Ruth Davies

Partner at John Pickering and Partners

British Lung Foundation - Year 2 Asbestos-Related Diseases Grants Launched

The British Lung Foundation is happy to announce availability of the 2nd year of research funding in our 3-year Asbestos-Related Diseases initiative.

The BLF's Asbestos-related Diseases Advisory Group has selected four priority areas for funding in the 2nd year of this scheme. New applications must focus on one or more of the following priority areas:

- (i) a stratified medicine approach based on targeting therapy on the molecular basis of asbestos-related diseases or biomarkers.
- (ii) collaborations with pharmaceutical companies to develop new therapeutic agents for asbestos-related diseases.
- (iii) collaborative projects that involve other organisations and/or funding bodies outside the UK (including clinical, laboratory and/or epidemiological research). (Please note that the BLF cannot fund research institutions outside of the UK. A principal investigator must therefore be based at a UK institution, although co-applicants can be based abroad).
- (iv) novel approaches to support or palliative care for individuals with asbestos-related disease.

Awards are available in the form of pump-priming grants (up to £25,000), project grants of up to 3 years (up to £200,000) and PhD studentships (£100,000). Deadlines for application submission are:

24 February 2012 - Project Grants and PhDs
27 April 2012 - Pump Priming Grants

For full information and to download application forms and guidelines, please see the BLF website: http://www.lunguk.org/research_and_grants/grants_available_how_to_apply

A total of £850k is available in this round. Applicants will be notified of funding decisions by the end of June 2012.

Please forward this email to any interested parties

Best Wishes,

Jan Jarrold

Research Manager

Meet the Mesothelioma UK Team

Liz Darlison

Liz trained at Charles Frear School of Nursing in Leicester qualifying in 1986. Since 1992 she has been based within the cardio-respiratory directorate of the University Hospitals of Leicester at the Glenfield Hospital site. Liz was a ward sister/manager in respiratory for several years and in June 2000 she took up the post of Respiratory Nurse Specialist (Lung Cancer). Liz's interests within lung cancer have always focused on developing the nursing contribution, within the multidisciplinary team, to improve patient and carers experience across the whole cancer pathway.



To meet demand locally and nationally Liz developed an interest in Mesothelioma which resulted in the establishment of Mesothelioma UK, the National Macmillan Mesothelioma Resource Centre. Liz is currently a Consultant Nurse leading the development of Mesothelioma UK. In 2007 Liz was awarded the Nursing Times Cancer Nurse Leader of the Year Award sponsored by the Royal Marsden NHS Foundation Trust. Liz is the former chair (until January 2011) of the National Lung Cancer Forum for Nurses and represents nursing on a variety of national and professional committees. Liz is very family minded person; she works hard but plays hard too. Her love of the outdoors has meant that she has recently taken up golf and loves to take part in competitions.

Tracey Heseltine

Tracey is the Helpline Assistant for Mesothelioma UK and is normally the first point of contact. She is also PA to Nurse Consultant, Liz Darlison. Tracey first took up the role in September 2004 soon after Mesothelioma UK was formed.



Tracey has a background in administration and worked for National Nuclear Corporation as a proof reader for several years. She also worked for a tour operator. She returned to work after having two children and has volunteered for two Leicester cancer charities.

Tracey has recently taken up camping and for the first time this year set up camp in Dorset and Devon and thoroughly enjoyed the experience. She hopes to continue her outdoor experiences next year and maybe a little further afield, perhaps across the Channel. Tracey is currently learning to Zumba.

Jill Lemon

Jill Lemon is the Fundraising and Marketing Manager for the Mesothelioma UK Charitable Trust. Jill's background is in administration, she joined Glenfield Hospital in 1995 on the Cardiac Surgery wards having been in a management position in a private company for 5 years.



In 2002 she joined Liz Darlison in the Lung Cancer Team as the first Lung Cancer Tracker in the country. This role was entered in the Lung Cancer Good Practice Guide and was adopted by other cancer networks nationally and internationally not only in lung but other cancer specialties. Her role gradually developed into the University Hospitals of Leicester Lung MDT and Patient Pathway Co-ordinator.

Jill joined Mesothelioma UK in 2007 where she project managed a national audit called ChiMP (Chemotherapy in Mesothelioma Patients). The audit was a one year project launched in February 2008 with the aim to clarify what, where and how much chemotherapy treatment was being prescribed to mesothelioma patients in England. She then joined the Charitable Trust in 2009 as Fundraising and Marketing Manager which she has found challenging but thoroughly enjoys. Jill's love of travel has taken her on many cruises and she has visited some wonderful places around the world and hopes to complete her bucket list of places she would like to visit.

Sophie Littlejohn

Sophie Littlejohn, is an administration apprentice. She is 18 years old and has just left school after completing her AS levels at Robert Smyth Academy.



Sophie is now working towards completing an NVQ certificate in Business and Administration. She recently joined Mesothelioma UK Charitable Trust in an apprentice role.

She recently passed her driving test and is enjoying the freedom of the open road.

Dawn McKinley

Dawn McKinley, is the Operational Manager of British Thoracic Oncology Group (4 days per week) and for Mesothelioma UK (1 day per week).



Dawn took up the role for BTOG in October 2002 and for Mesothelioma UK in June 2004. Dawn is also a trustee of the Mesothelioma UK Charitable Trust. The roles encompass finance, marketing, all aspects of the organisation and co-ordination of related meetings, conferences and study days and the administration of both organisations. The roles also support projects, such as patient surveys and treatment consensus statements, which improve the patient pathway and experience.

Dawn's professional background includes marketing, PA roles and VAT accountancy. Prior to October 2002 Dawn worked in Sydney, Australia for two years as a VAT Consultant after taking a transfer to her existing accountancy firm's sister company in Sydney.

Since then, Dawn tries to visit Sydney and the good friends she made over there every other year, she also likes making jewellery and she is currently joined a reading club.

Mesothelioma UK Charitable Trust 1126083

Fundraising News

It costs £220,000 to run Mesothelioma UK a year

£55,000 per quarter
£18,300 per month
£4,250 per week
£900 per day
£450 per ½ day
£100 per hour

Contact:

Jill Lemon Mesothelioma Fundraising & Marketing Manager
jill.lemon@uhl-tr.nhs.uk

Mesothelioma UK

Freephone: 0800 169 2409
www.mesothelioma.uk.com

If you want to sponsor any of our fundraisers, go to our website and click on the links.

Log on to
www.mesotheliomaukappeal.fund.co.uk and
"Buy a minute for a pound"

The Charitable Trusts Christmas Tombola

Our Tombola will be held again this year in the main reception of the Glenfield Hospital in Leicester on Wednesday 14th December.

Last year with the help of our two wonderful volunteers Julia Baines and Clive Leaney, we raised a huge £324.57 and this year we hope to beat that in a tribute to our wonderful and dear friend Clive, who very sadly passed away on Thursday 3rd November 2011, from Mesothelioma.

The Iwade 2012 Calendar Girls

There is a wonderful group of ladies from Rainham in Kent, who led by their friends, Linda and Kelvin Wren are raising money for Mesothelioma UK.



Their aim is to sell 500 of their own '2012 Calendar Girl' calendars for the Charitable Trust in a bid to raise awareness about the dangers of asbestos and the diseases it causes.

Sadly Kelvin's brother Simon, died of mesothelioma aged just 48 years old on the 10th March this year, and so wanting to do something in his memory, Linda and her friends set about putting together this fantastic Calendar.



There will be home baked cup cakes on sale and hand made Christmas tree and cake decorations as well as our charity Christmas Cards so if you are near by please pop in and see us and 'You Too Can Do Something Good Today, Support Mesothelioma UK'.

With the help of their wonderful sponsors, which they have 12 sponsors one for each month of the year, a date for their photo shoot with Charly Bowman & Natalie Barker from NCB Photography was set and the adventure began.

The ladies had a great time making this calendar and further to this they held a fundraising night on the 19th November 2011 at their local pub The Woolpack Public House in Iwade who have been so supportive. The aim of this fundraising is to raise a total amount of £3500 for the "Mesothelioma UK Charitable Trust".

If you would like to get your very own 2012 Calendar Girls Calendar please contact Linda at linda.wren@yahoo.co.uk

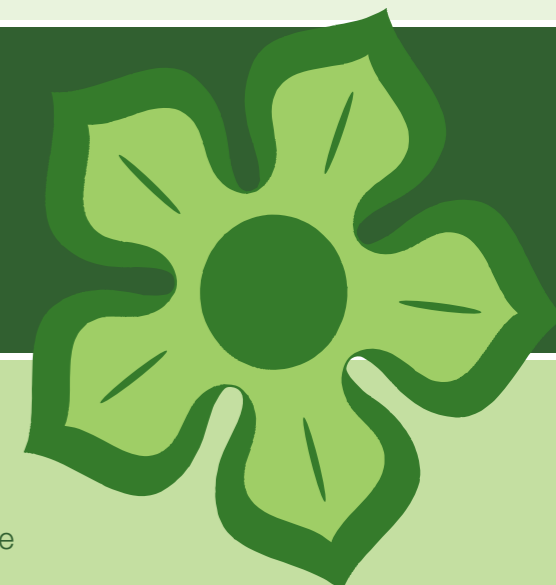


In This Issue

- Christmas Tombola
- Calendar Girls
- Our Fab Fundraisers

Please remember you can send your Dedications and Christmas messages for loved ones to feature on the website during the festive season.

Please submit yours before 22nd December 2011 go to our website www.mesothelioma.uk.com and click on the sponsor bar.



Our Fab Fundraisers

Our fundraisers just get better and better, from large to small events they all make a huge difference and YOU are just so fantastic that we want to say a huge huge thank you to all our supporters who have given their time and dedication selflessly to help support the charity by raising awareness and funds.

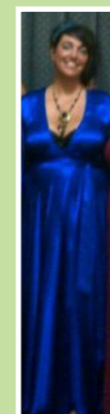
Again YOU have stepped up to the challenge and YOU are the ones that through hard work and support this year have helped raise enough funds so that Mesothelioma UK can now employ a second dedicated Mesothelioma Specialist Nurse.

Mesothelioma UK's vision is to employ a further five Specialist Nurses in high incidence and remote areas within the next three to five years.

Here are just a few examples of what YOU have been doing.

ELSIE AND PETER BURT, TOGETHER WITH THEIR DAUGHTERS AND FAMILIES HAVE RAISED £9K!

Elsie and her girls got together and organised a Surprise Birthday Party/Charity Night with the help of their local Masons' Lodge who hosted the evening's events, for her wonderful husband Peter, who has recently been diagnosed with Mesothelioma. They recently held a raffle for a Smart Car which raised £2,500, and Nicola held a tea party and the family organised various other events. Peter holding the winning ticket for the Smart Car. Picture courtesy of the Epping Forest Guardian.



'BLUE RIBBON CHARITY BALL'

Shevaun Joy and Sally Greene organised the Ball in memory of their lovely Dad, Grandad, William 'Billy' Greene.

'FUN DAY'

Olivia & Wendy Hames
Auction, Raffle, Tombola, Stalls, Face & Nail Painting, Cake Sale, Message Balloons, Karaoke and lots more!

MCONIE AGENCY



Are celebrating 21 years and have held fundraising events throughout the year to try and raise £2,100



'MURDER MYSTERY'

Annie Wood and Ebbsfleet & Northfleet Rotary Club.

LUCI HEATHER & CATER ALLEN

Held a Charity Day at work!



It just remains for me to say, 'On behalf of the Charitable Trust and the Lovely Iwade Calendar Girls a Very Merry Christmas and a Happy New Year to you all'.



Jill Lemon

Fundraising and Marketing Manager

With grateful thanks to our sponsors for 2010/11

The Mesothelioma UK Charitable Trust exists to raise funds to support the services provided by Mesothelioma UK and any sponsorship, grants or donations made to the charity support this.

Asbestos is dangerous, let's do something about it and get involved...

Gold Sponsor



Silver Plus Sponsors



**Building & Civil Engineering
Charitable Trust**

Silver Sponsors



PANNONE

Bronze Sponsors



Rocketmedical

Fentons Solicitors LLP
A Leading UK Personal Injury Firm

Event and Service Sponsors

£1000.00 Sponsorship of the Mesothelioma UK Helpline for 1 week



HASAG



**WE ARE
MACMILLAN.
CANCER SUPPORT**

Irwin Mitchell kindly donated £135.00 to the charity; donations were made from those that attended their Mesothelioma study day, 'The Next Decade'. Macmillan kindly donated £3000.00 towards the 2011 patient/carer day

Details of all sponsorship, donations, fundraising and successful grant applications are posted on our website at www.mesothelioma.uk.com

To order patient information booklets please call our freephone helpline on 0800 169 2409 or email mesothelioma.uk@uhl-tr.nhs.uk